

Size: 210 x 294 mm

ZIG-ZAG LOCKSTITCH BATTERY OPERATED SEWING MACHINE

•Zig-Zag & Variable Stitches

Item no. 3899, 3899B, 3899BX, 3899BXX

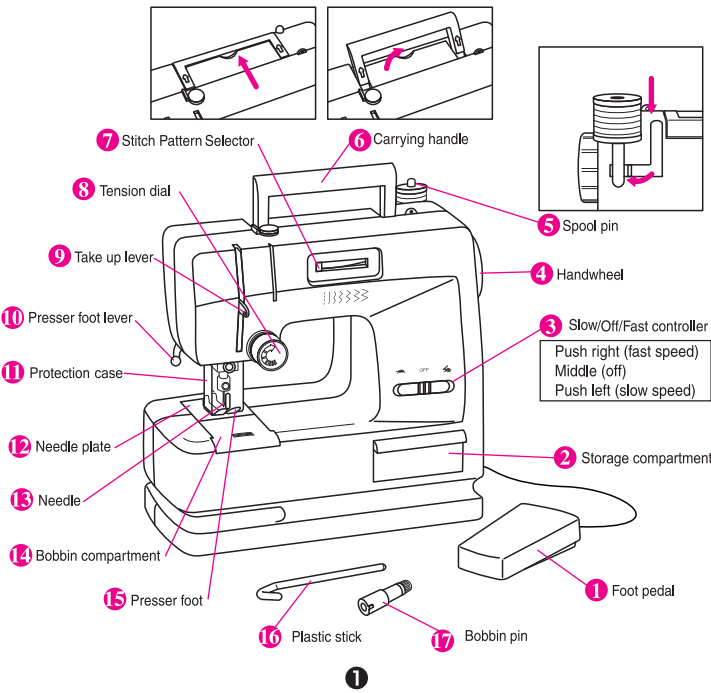
WARNING:
CAUTION-The product contains functional sharp point & functional sharp edge. To be used under the direct supervision of an adult.

WARNING:
CHOKING HAZARD-Small parts. Not for children under 3 years.

WARNING : Product contains sharp needle and should be used under the direct supervision of an adult.

Please keep this machine out of the reach of very young children.
Please read these instructions before using your new sewing machine.
Ask an adult for help.

PARTS OF YOUR SEWING MACHINE

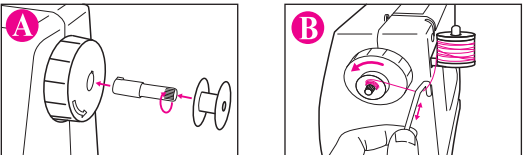


WINDING THE BOBBIN

Put the bobbin pin into the hole in the handwheel and turn it in a counter-clockwise for a small angle.

Put the thread through the small hole in the side of the bobbin from inside for some distance and wind several coils by hand then put the bobbin around the bobbin pin. Be sure that the winding direction is to be the opposite side of the turning way of the handwheel. (Diagram A)

Hold the thread lightly, turn on to slow speed (push left) and begin to wind the bobbin. Help the bobbin wind evenly by guiding the thread with a plastic stick as shown in diagram B. When winding is finished, switch off the power to push the switch button in middle.



THREADING YOUR SEWING MACHINE

(Use cotton or polyester thread in this machine when the thread supplied has run out.)

Lower the press foot using the presser foot lever. Position the needle in its highest position by moving the handwheel counterclockwise.

After placing the spool of thread in the spool pin pass the thread through the thread guides as shown in the Diagram C1-10. (Make sure you place the thread between the tension discs on the tension dial.)

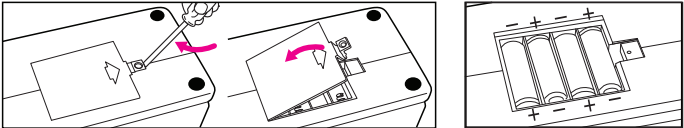
3

INSTALLING THE BATTERIES

WARNING : DO NOT USE RE-CHARGEABLE BATTERIES (i.e. nickel cadmium).

- We recommend the use of alkaline batteries.
- Do not mix batteries (old/new – alkaline/carbon/zinc).
- Make sure the Slow/Off/Fast switch is in the middle off position.
- Open the cover to the battery compartment as show in the diagrams.
 - Turn the machine over.
 - If there is a screw securing the battery door, remove it.
 - Gently pry the door open as shown.
 - Insert 4 x 1.5 volt batteries (type AA) into the battery compartment. Make sure the batteries are positioned correctly as illustrated in the etched diagram inside the battery compartment.
 - Replace the battery compartment door.

HINT : Always remove batteries from the machine if you are not going to use it for an extended period of time.



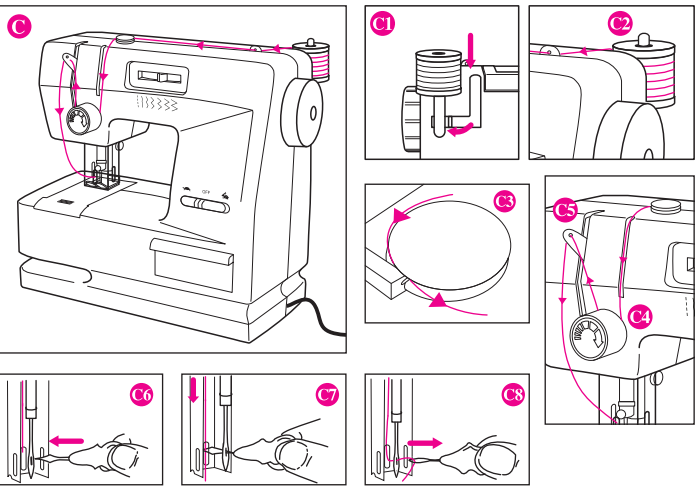
GETTING STARTED

Make sure the power Slow/Off/Fast controller is in the middle OFF position. Put in batteries in right polarities marked on the machine. Please note reverse movement of the machine does not stitch fabric. Continuous and long time reverse movement of the machine may destroy the machine.

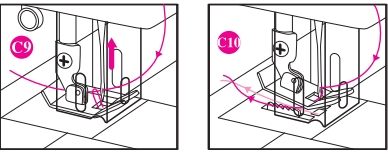
2

The needle should be threaded from front to back (to use the threader, see diagram C6-8). To pull up the bobbin thread, lift the presser foot by using the presser foot lever. Hold the thread from the needle at the back of the machine (Diagram C9) and slowly turn the handwheel in the direction of the arrow so the needle enters the needle plate and comes up again. The needle will automatically pick up a loop of bobbin thread which you can gently pull out from under the presser foot (Diagram C10). You can also remove the protection case to do this step and replace the protection case.

Pass both threads under the presser foot, between the forks and to the rear of the machine for about 8cm (3 inches).



4



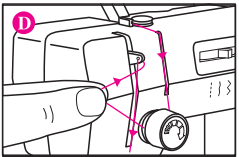
HOW TO SEW

Slide Stitch Pattern Selector to extreme left for straight stitch and to right for zig-zag patterns. Zig-zag adjustment is set further to the right.

Lift the presser foot with the presser foot lever. Place the material under the presser foot and lower the lever. (Always make sure that the presser foot is lowered before starting to sew).

Sew a stitch by turning the handwheel in the direction of the arrow, so the needle enters the fabric. Push the Slow/Off/Fast switch left or right to turn the power on and press the foot pedal to start sewing.

Stop stitching before you reach the edge of the material by releasing the foot pedal.



Turn the handwheel in counterclockwise until the needle is out of the fabric.

Pull a length of thread through the tension dial in order to release the tension on the needle (Diagram D). Gently pull the material to the back of the machine and cut the threads close to the fabric.

(If your machine jams or the thread catches in the lower part of the sewing mechanism, you can remove the material by turning the handwheel gently in counterclockwise until the fabric or thread can be removed from the machine.)

5

CHANGING THE NEEDLE

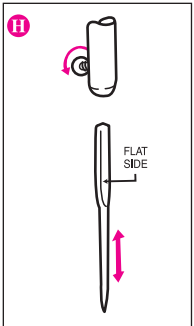
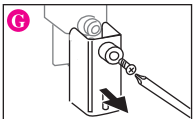
This operation must only be carried out by an adult. Ensure the machine is switched off and the batteries removed before changing the needle.

To remove the old needle:

- Raise the needle to its highest position by turn the handwheel counterclockwise towards you.
- Lower the presser foot.
- Loosen the screw and remove the protection case (Diagram G).
- Loosen the needle clamp screw holding the needle in place and remove the needle from the clamp.

To insert the new needle:

- Insert the new needle (size 12/80 or 14/90) into the needle clamp. Make sure that the flat side of the screw next to the screw (Diagram H).
- When inserting the needle into the clamp, push it up as far as it will go and tighten the clamp screw firmly.
- Replace the protection case and tighten the screw.



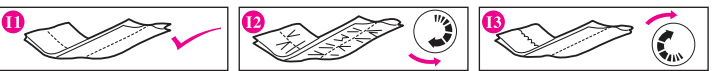
CHECKING THE QUALITY OF THE STITCHING

Check your stitches against the illustration as shown in diagram I1-3.

Diagram I1 shows a correctly sewn lockstitch.

Diagram I2 shows top stitch is too tight, adjust the tension dial counterclockwise.

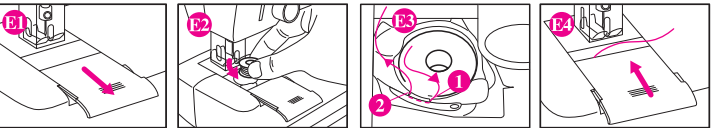
Diagram I3 shows to stitch is too loose, adjust the tension dial clockwise.



7

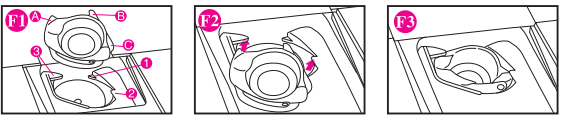
CHANGING THE BOBBIN

Slide off the bobbin compartment cover out as shown in Diagram E1 and place a full evenly wound bobbin into the bobbin holder (Diagram E2). (Make sure the bobbin thread is wound on the bobbin in counterclockwise direction – if not then turn the bobbin over.) Gently pull out about 8cm (3 inches) of thread from the bobbin and pull along slot 1 (Diagram E3 on the bobbin compartment). Pull the thread towards you and across through slot 2. Replace the bobbin compartment cover, leaving the end of the thread outside, towards the right of the cover as shown (Diagram E4). Never operate the sewing machine with the bobbin compartment left open.



CORRECT POSITIONING OF BOBBIN HOLDER

If possible, never attempt to remove the bobbin holder from the machine. If the bobbin holder comes out or is removed, follow these steps to re-install. Follow the Diagrams F1-3 below to properly place the parts and points where they belong. Put part "A" on the bobbin holder under part "3" in the machine as shown. Make sure part "B" on the holder is over part "1" on the machine. Press down on the front of the bobbin holder and position part "C" on the holder under part "2" on the machine. The bobbin holder should be held securely in place but still be free to move a little. If you encounter problems when you try to sew, especially of the upper thread is not pulling the bobbin thread up or you experience knotting in either threads, remove the bobbin case and repeat the re-installation process.



6

CARING FOR YOUR MACHINE

Do not use liquids to clean the machine. Only wipe with a dry cloth. Do not attempt to sew heavy or thick material or to force the needle through material using the handwheel.

There is no serviceable part inside the machine. Please do not take the machine apart.

Do not pull the fabric while stitching. The needle may bend or break and cause other damage on the machine.

HELPFUL HINTS :

- The sewing machine will not operate.**
 - Batteries are inserted incorrectly. Re-insert using the diagram provided inside the battery compartment.
 - Batteries are dead. Replace with new batteries.
 - Verify that main power switch is on.
- The sewing machine runs, but does not form stitches.**
 - Machine is incorrectly threaded. Re-thread the machine again.
 - Needle is incorrectly threaded. Make sure thread is inserted from front to back.
 - Needle is not properly inserted. Make sure the needle is inserted straight, all the way to the top of the holder and with the flat side to the back.
 - Batteries are inserted backward. Check placement diagram in the battery compartment and re-insert.
 - Needle is bent/deformed. Replace with a new needle.
- The sewing machine sews slowly.**
 - Batteries are old, weak, mismatched or not alkaline. Replace with new batteries.
- Top stitches are not balanced.**
 - Tension dial is either too tight or too loose. Adjust the tension dial accordingly to diagram I1 - I3.
- Bobbin thread does not come up.**
 - It will be incorrectly placement of bobbin. Please refer to changing the bobbin diagrams E1 - E4.
- The sewing machine is jammed.**
 - Fabric is too thick. It needs to select thin and light material.
 - Thread got caught in the bobbin. Remove bobbin cover and cut away on tangled thread.

8